

Overview of Funding at NIH



Michelle C. Dunn

Program Director, National Cancer Institute

JSM 2010, July 28 – Aug 5

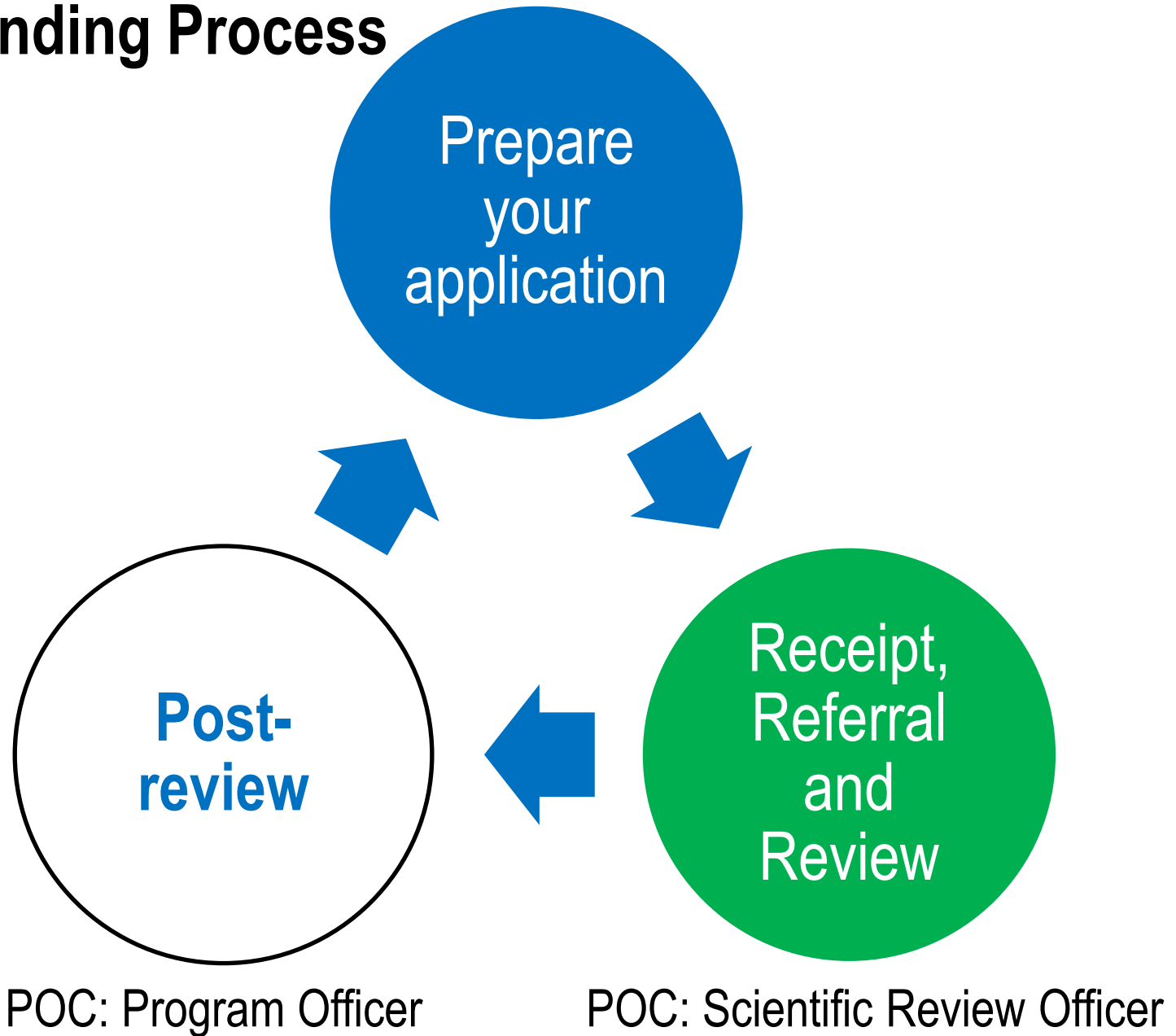
What is NIH interested in funding?



Video about NIH interests

- Health research, which can be
 - Basic, clinical, or translational
 - Medical or behavioral
- (including) Statistical methodology or applications that contribute to health research

Funding Process



Preparing your application

STEP 1

Decide on your
MECHANISM
and
FUNDING
OPPORTUNITY
Announcement

STEP 2

Refine your
RESEARCH
PLAN

STEP 3

Write your
COVER
LETTER

STEP 1: Common Research Grant Mechanisms

	Description	Duration	Direct costs	page limit
R01	Traditional Research Project Grant	Typically 3-5 yrs	Typically ≤\$250k/yr	12
R03	Small Research Grant	≤2 yrs	\$50k/yr	6
R21	Exploratory/Development Grant • <i>Pilot or feasibility studies</i> • <i>high risk/high return</i>	≤2 yrs	\$275k over 2 yrs	6
R15	AREA Grant • <i>Supports research at institutions receiving little NIH funding</i> • <i>Strengthens the research environment</i> • <i>Exposes students to research</i>	≤3 yrs	\$300k over 3 yrs	12

STEP 1: Common Training Grant Mechanisms

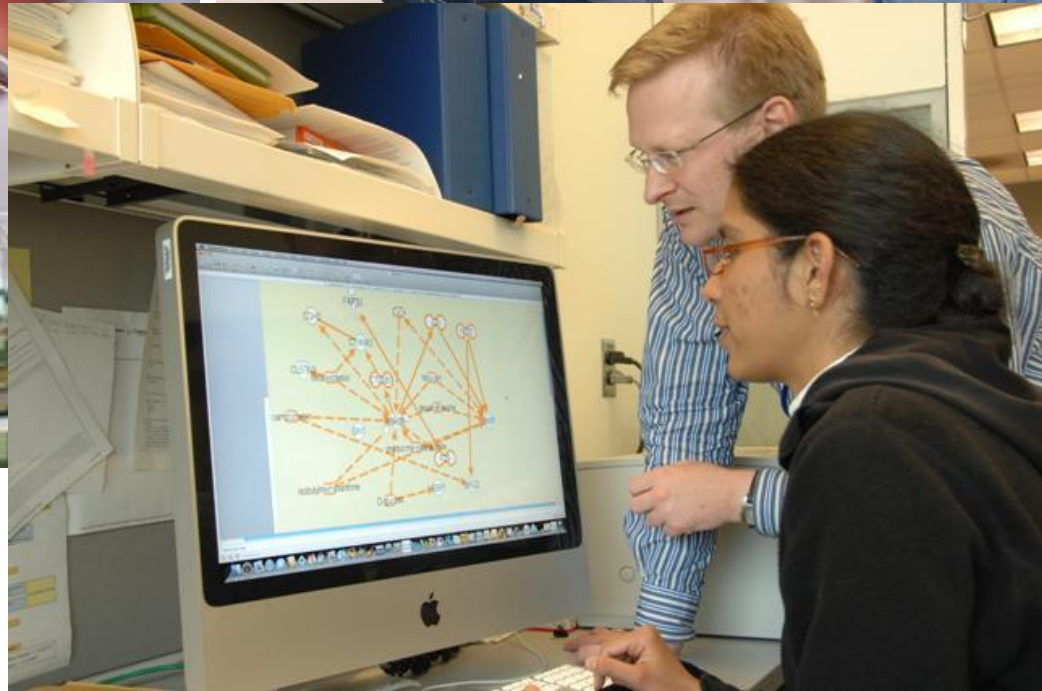
	Description	length	Career level	eligibility
K25	Mentored Quantitative Research Development Award <ul style="list-style-type: none"> • <i>Statistics, math, CS, engineering, physics</i> • <i>Little or no background in biomedicine</i> • <i>Must identify a mentor</i> 	3-5 yrs	Any w/ full-time appt	US citizens or PR
K99/ R00	Pathway to Independence Award <ul style="list-style-type: none"> • <i>Within 5 yrs of terminal degree</i> • <i>Mentored + independent support</i> 	1-2 yrs + 3 yrs	early	any
T32	Ruth Kirschstein National Research Service Award <ul style="list-style-type: none"> • <i>Institutional award</i> • <i>Supports training</i> • <i>Stipends, tuition, travel, health insurance</i> 		pre and post doc	US citizens or PR

STEP 1: Funding Opportunity Announcements

Announcement Type	Description
Omnibus/Parent	<ul style="list-style-type: none">• formerly called unsolicited research grants• exist for most grant mechanisms (but NCI doesn't participate in R03 and R21 omnibus)
RFA	Has a set-aside pot of money
PA	<ul style="list-style-type: none">• Statement of interest by the institute• Important at funding but not necessarily at review• A separate review may occur
Other	<ul style="list-style-type: none">• SBIR contracts• ARRA initiatives

STEP 2: Refine your Research Plan

Seek Collaborators – bench scientists, clinicians, other statisticians



STEP 2: Refine your Research Plan

Seek advice from mentors and resources such as websites

The screenshot shows the StatFund website, a resource for biostatisticians. The header includes the National Cancer Institute logo and name, the U.S. National Institutes of Health logo, and the website URL www.cancer.gov. The main title is "StatFund" with the subtitle "Funding Opportunities in Biostatistics". A search bar is located in the top right corner. Below the header is a navigation menu with four items: "About StatFund", "Funding Opportunities", "Application Procedures", and "Currently Funded Grants". The main content area is divided into four sections, each with a title and a brief description:

- Funding Opportunities**: Find current funding opportunities relevant to statisticians, such as RFAs or SBIR contracts for statistical methodology. Program announcements, which are useful when applying for a small or exploratory research grant, are also listed. Find out more about available [Funding Opportunities](#) »
- Application Procedures**: Learn how to apply for an NIH grant and get important information about current policies. Learn more about [Application Procedures](#) »
- Currently Funded Statistical Grants**: Read about statistical methodology grants funded by NCI's Surveillance Research Program. Search by subject area of application or biostatistical method. Abstracts and publications associated with each grant are available. See a list of [Currently Funded Statistical Grants](#) »
- About StatFund.cancer.gov**: StatFund is an online resource that provides information about biostatistical funding opportunities within NIH, application procedures, and funded grants within NCI's Surveillance Research Program's portfolio. Read more [About StatFund.cancer.gov](#) »

STEP 2: Refine your Research Plan

Think about dissemination and impact

- *Will you hire programming assistance?*
- *How will your research to be useful at the bench or at the bedside?*



The Comprehensive R Archive Network

Frequently used



STEP 2: Common Mistakes to Avoid



Reviewers in this video clip point out that over-ambitiousness and lack of clarity are two mistakes to avoid.

STEP 3: Preparing Your Cover Letter

Suggest a study section

- BMRD
- EPIC, ACE, GCAT

Suggest a funding institute

- NCI, NIGMS, NIAID, NHLBI,...
- Primary and secondary

Do NOT name reviewers

- ~~T. Bayes~~
- ~~R. Fisher~~

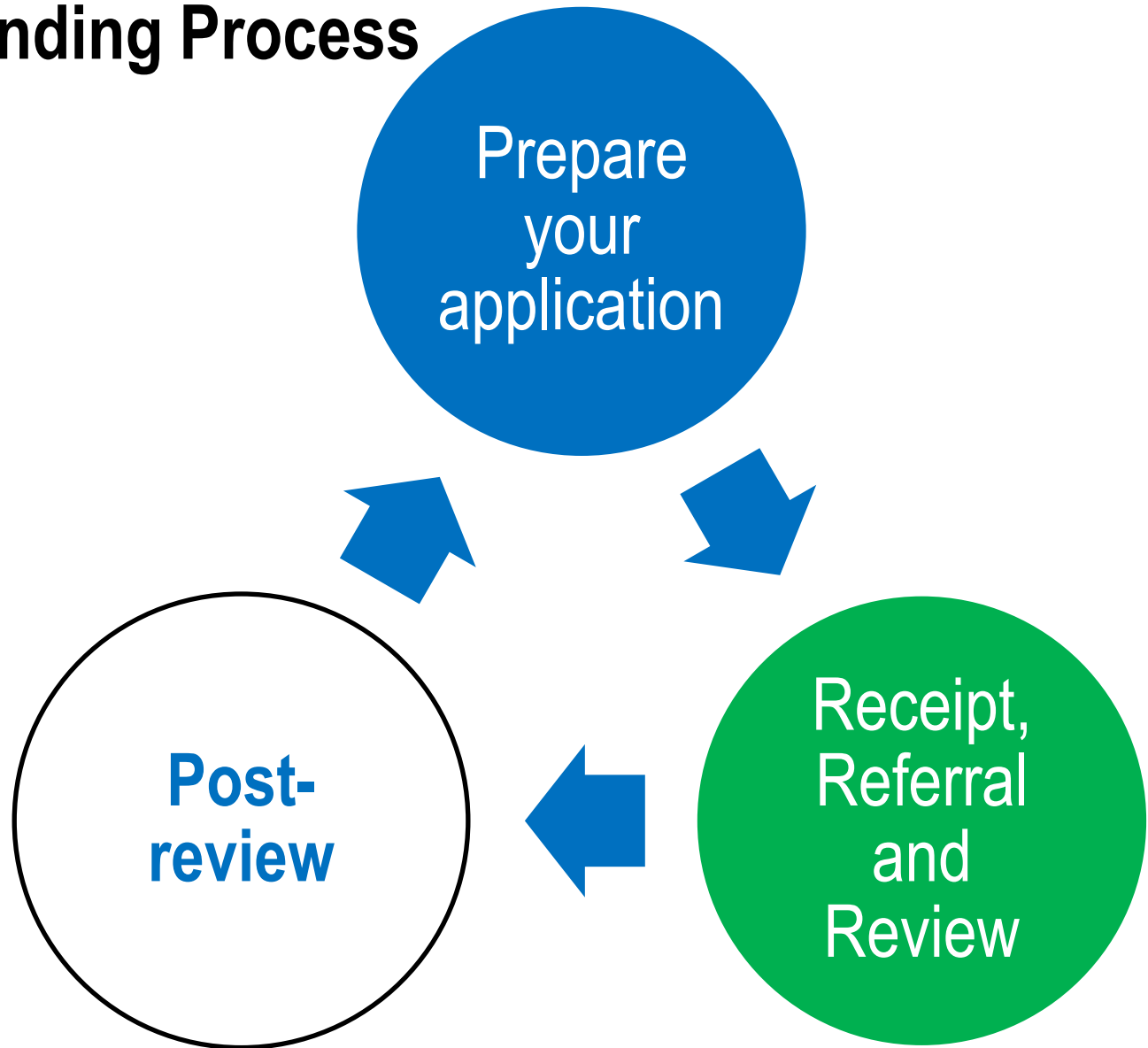
Other

- Cite continuous submission eligibility

Submission Due Dates

- Standard due dates occur 3 times per year (Feb, June, October for new R01 submissions)
- Your institution may set earlier due dates (technically the institution is the applicant)
- RFAs, PAs can have non-standard due dates
- Exceptions for study section members and new investigators

Funding Process



CSR: Receipt, Referral, and Review

- Most applications go to CSR, which does referral and review for all of NIH
- Scientific Merit Review: Study Section Meeting
- To view a mock review: search “peer review revealed”

What does the study section look for?

significance, investigator, innovation, approach, and environment

- Is there enough preliminary work to show that there is a high probability of success?
- If this research is successful, how will it change the state of science?
- Is this approach reasonable and innovative?

What makes a good grant proposal?

(Videos where two reviewers give opinions)

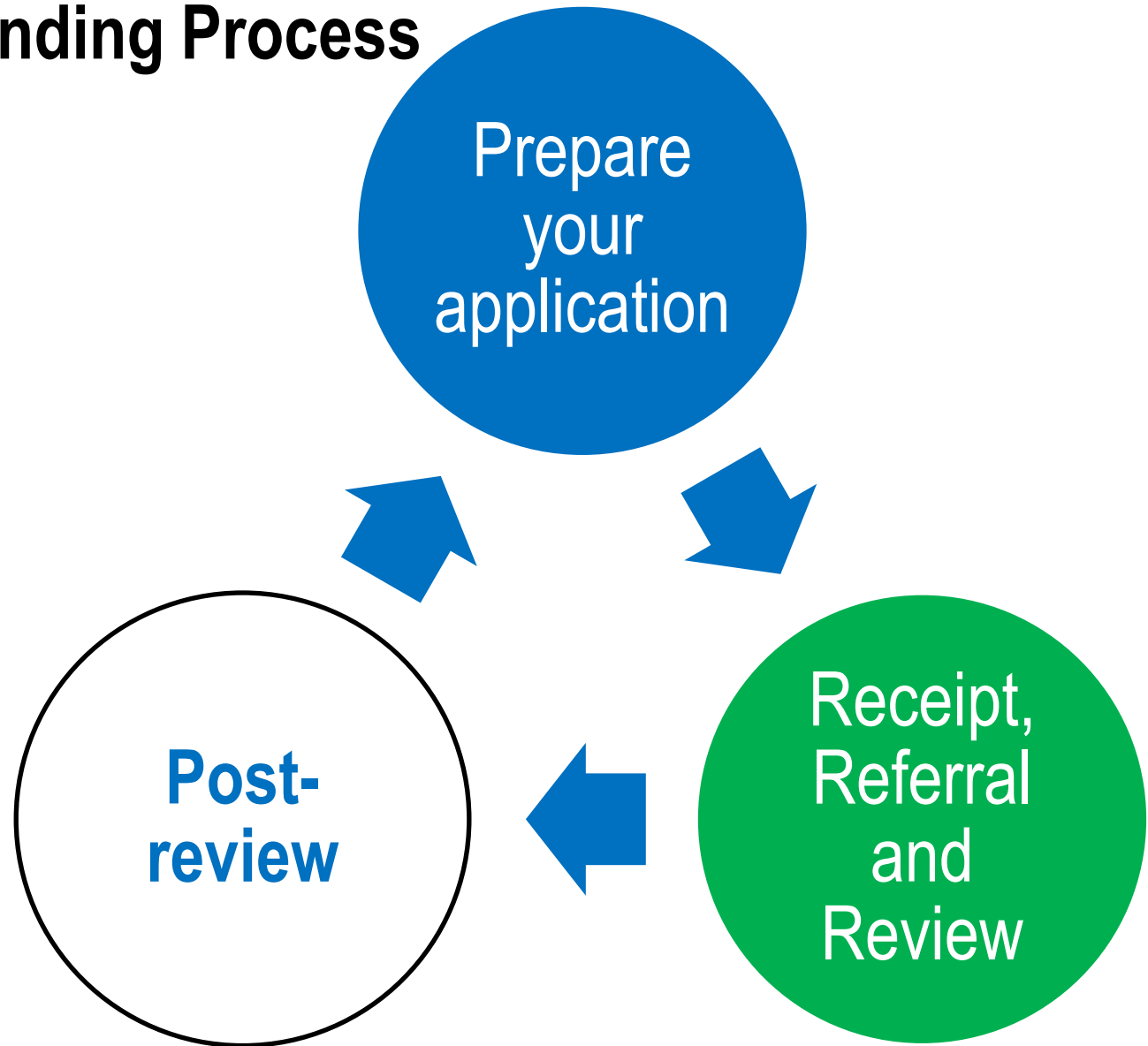


What makes a good grant proposal?

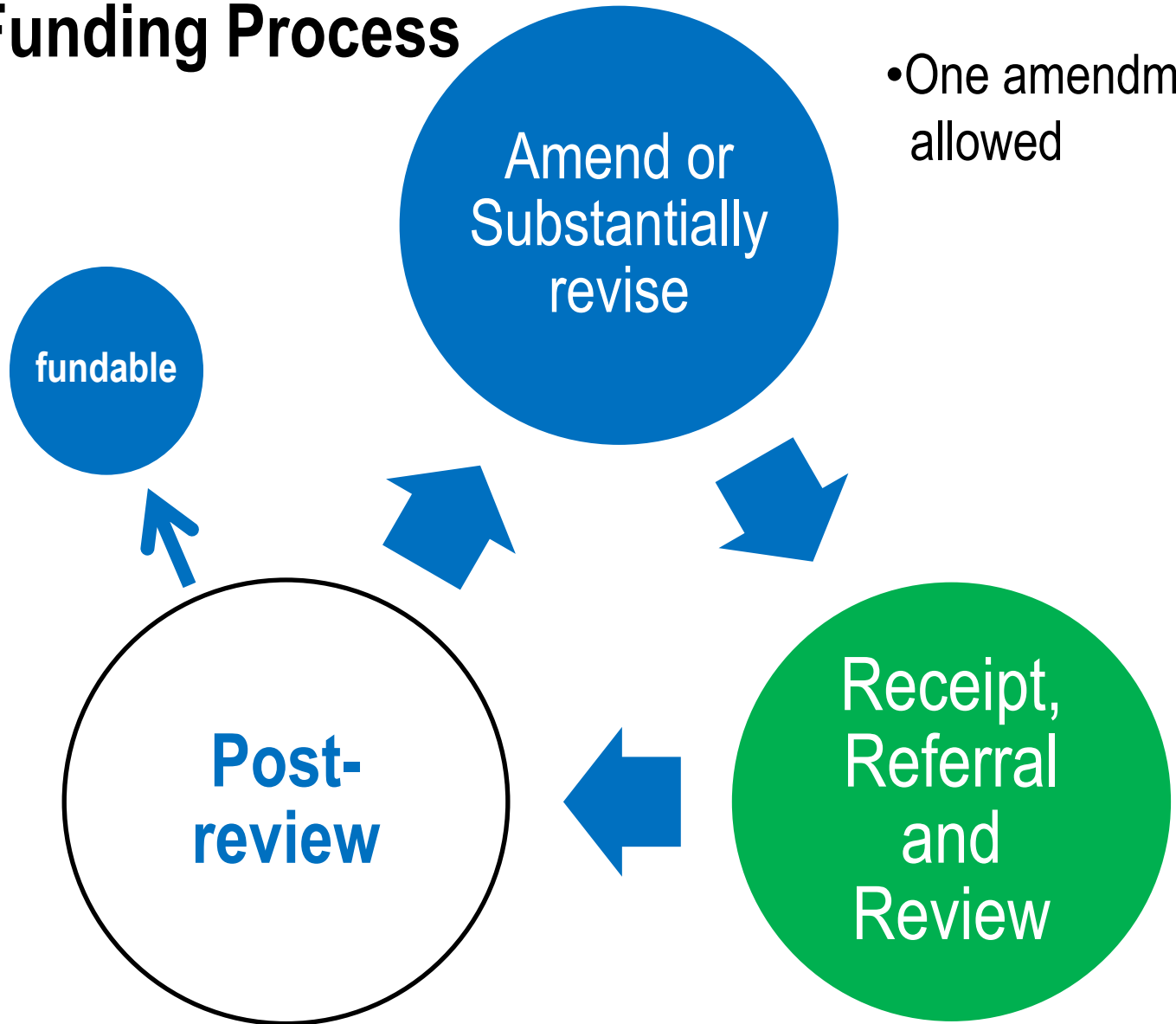
(Information about accessing videos on slide 29)



Funding Process



Funding Process



- One amendment allowed

Funding Decisions

- Two levels of review:
 - 1) Scientific Review by the study section
 - 2) Institute's Council
- Decisions based on
 - 1) Institute priority
 - 2) Availability of funds
 - 3) Scientific Merit

Payline

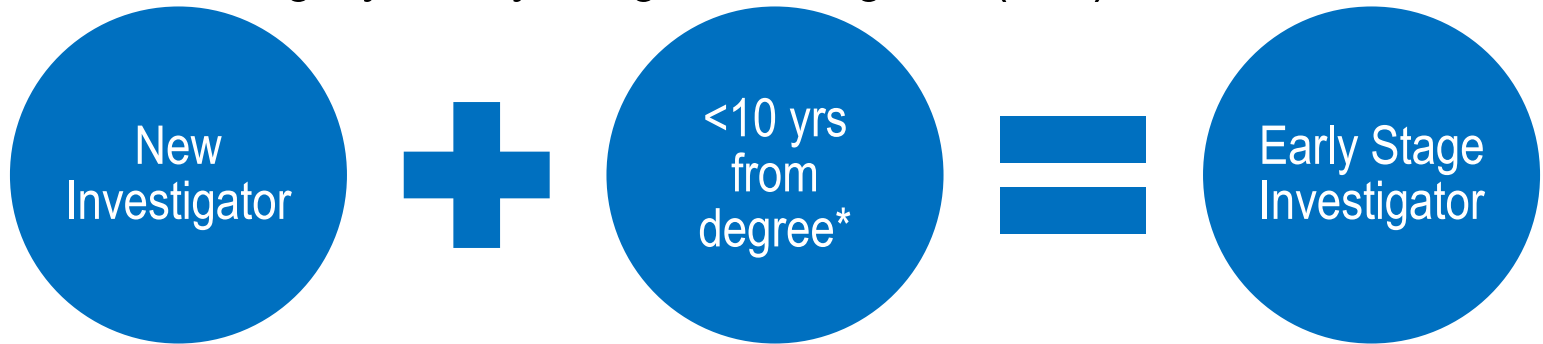
- A “cut-off” raw score or percentile
 - separates applications into those likely or unlikely to be funded
 - an approximation of roughly where funding will be
 - not a guarantee of funding or of non-funding
- R01 and other mechanisms (depending on the Institute) are percentiled
 - Percentiling is done for each study section by ranking the overall impact scores for a given round and the two previous rounds
 - Removes the “tough study section” effect
 - In a given round, study sections which review a larger number of applications will have a larger number fall below a payline

Payline Facts

- 1) Varies by Institute
- 2) Varies by amendment status (at some Institutes)
- 3) Same for all study sections
- 4) Different for new or early stage investigator R01s

New Investigators

- Has not previously received a significant NIH award
- New category: Early Stage Investigator (ESI)



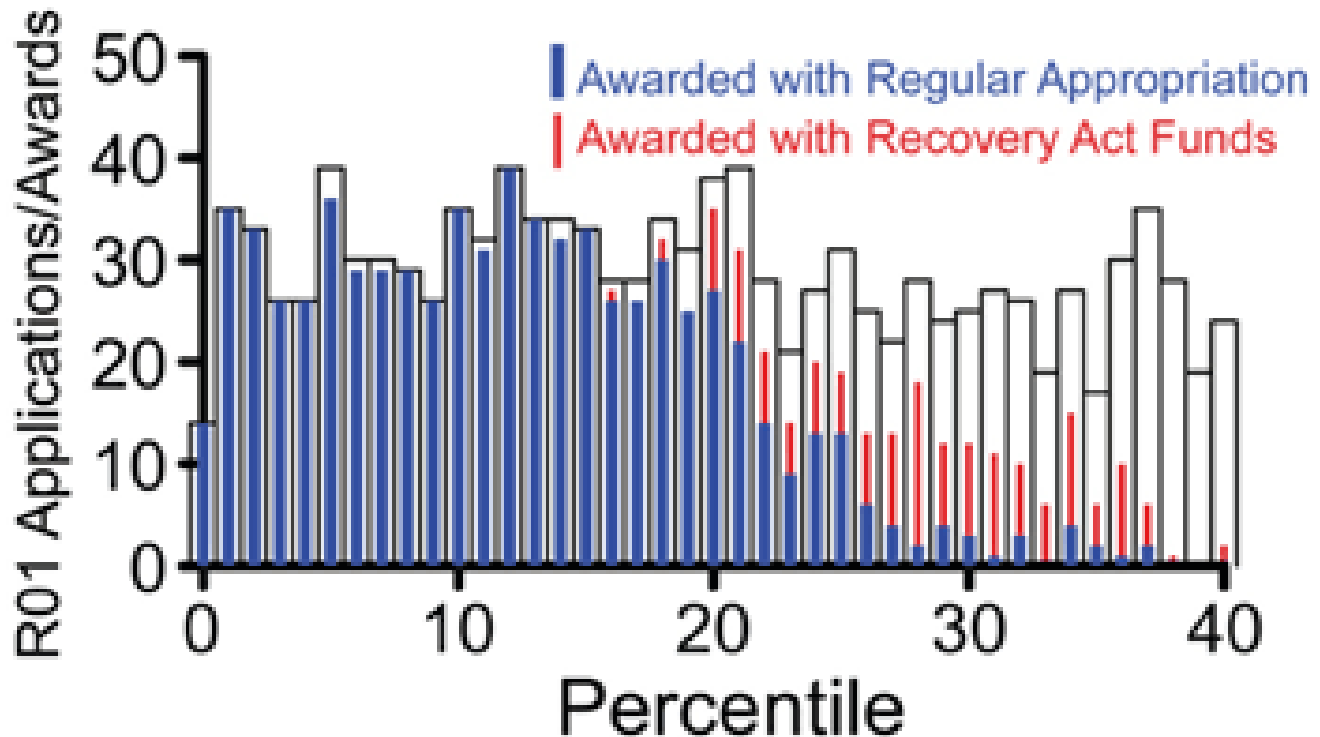
- New Investigator R01 (called *R01):
 - grouped at review
 - special (better) NI/ESI payline
 - Some Institutes, such as NHLBI, have a better R01 payline for ESI only

* less than 10 years since a terminal research degree or medical residency

Paylines for Large Institutes (FY 2010)

Institute	R01 (%ile)	*R01 (%ile)	R21 (varies)	R03 (varies)	R15 (raw)
NCI	15	20	15%ile	30 raw	29
NIAID	11	16	31 raw	31 raw	22
NHLBI	16 for A0 12 for A1 10 for A2	+5 (for ESI only)	16%ile	16%ile	30
NIGMS	Does not	publish	paylines		
...					

NIGMS FY09 R01 Applications




Applications reviewed (open rectangles) and funded (solid bars).
Blue bars: supported using regular appropriated funds.
Red: supported using Recovery Act funds (2-year awards).

From the NIGMS *Feedback Loop* post December 10, 2009.

Once Selected for Funding

- Just-In-Time: updated other support, IRB approvals
 - Often automatically requested by eCommons
 - Does not necessarily imply funding
- Progress Reports: due yearly
 - Publications must be submitted to Pub Med Central
- Supplements
 - Two types: administrative, competitive
 - Ask about minority or re-integration administrative supplements
- Competitive Renewal (every 3-5 years)

More info: www.statfund.cancer.gov

 National Cancer Institute U.S. National Institutes of Health | www.cancer.gov

StatFund

Funding Opportunities in Biostatistics

[Home](#) | [Contact Us](#) | [Resources & Links](#)

Search

About StatFund	Funding Opportunities	Application Procedures	Currently Funded Grants
--------------------------------	---------------------------------------	--	---

Funding Opportunities

Find current funding opportunities relevant to statisticians, such as RFAs or SBIR contracts for statistical methodology. Program announcements, which are useful when applying for a small or exploratory research grant, are also listed.

Find out more about available [Funding Opportunities](#) »

Application Procedures

Learn how to apply for an NIH grant and get important information about current policies.

Learn more about [Application Procedures](#) »

Currently Funded Statistical Grants

Read about statistical methodology grants funded by NCI's Surveillance Research Program. Search by subject area of application or biostatistical method. Abstracts and publications associated with each grant are available.

See a list of [Currently Funded Statistical Grants](#) »

About StatFund.cancer.gov

StatFund is an online resource that provides information about biostatistical funding opportunities within NIH, application procedures, and funded grants within NCI's Surveillance Research Program's portfolio.

Read more [About StatFund.cancer.gov](#) »

More info: mock study section videos

national institutes of health home contact csr staff dir

center for scientific review search

Home > Resources for Applicants

**** New NIH Grant Review Process Videos**


printer friendly

NIH Peer Review Revealed


CSR has produced a series of videos to give you an inside look at how scientists from across the country review NIH grant applications for scientific and technical merit.

New and established applicants will find insights and understanding that can empower them to improve the applications and increase their chances for receiving a more positive review.

NIH Peer Review Revealed
Provides a front-row seat to a review peer review meeting.



NIH Tips for Applicants
Gives applicants practical advice and insights.



- For videos from which clips were taken for this presentation cms.csr.nih.gov/ResourcesforApplicants/InsidetheNIHGrantReviewProcessVideo.htm
- Find videos by searching “NIH grant process revealed”

More info: Program Officials/Directors

- NIGMS: Shawn Drew
drewl@mail.nih.gov
- NCI: Michelle Dunn
dunnm3@mail.nih.gov
- NIAID: Misrak Gezmu
mgezmu@niaid.nih.gov
- For contacts at other institutes, email Michelle