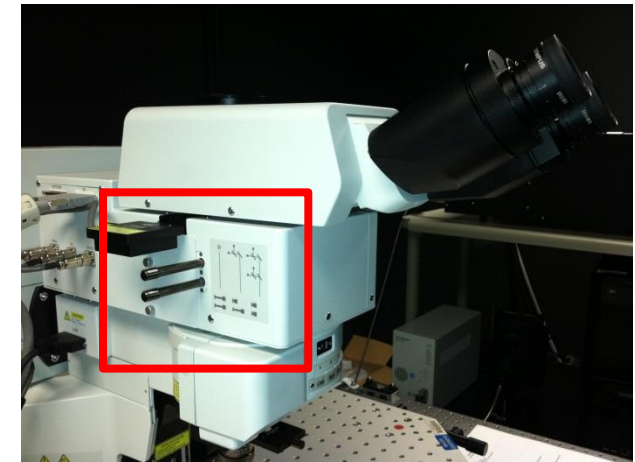
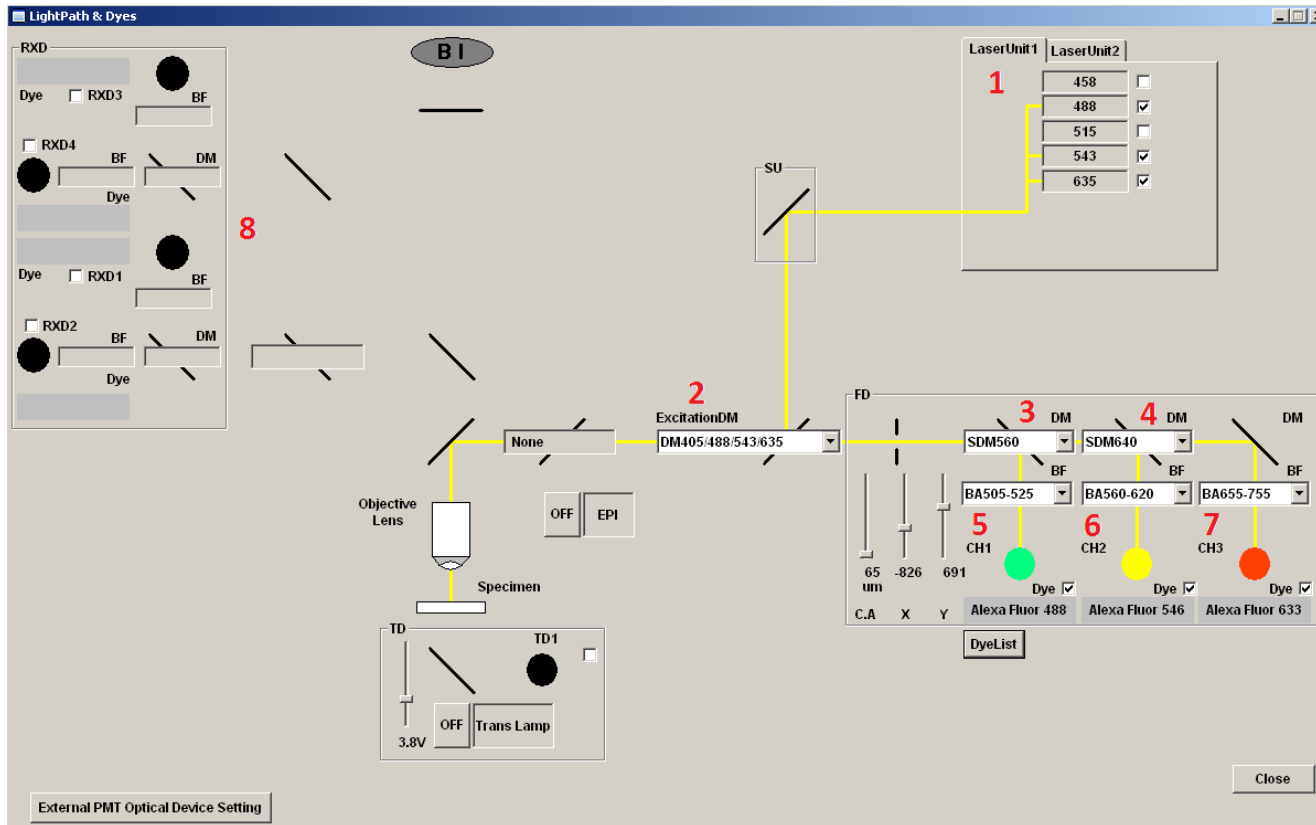


FV1000 Available Filters and Filtersets



Slider Positions

Both in:

- RXD1: Violet (420-460nm)
- RXD2: Green (495-540nm)
- RXD4: Red (575-630nm)

Top Only in:

- RXD3: LP (380-560nm)
- RXD4: Red (575-630nm)

#1	#2	#3	#4	#5	#6	#7	#8
Laser Unit 1	Laser Unit 2	Excitation Dichroic	Dichroic Mirror #1	Dichroic Mirror #2	Visible Ch1	Visible Ch2	Visible Ch3
458nm	Ti Sapphire: 690-1040nm	BS 20/80	Mirror	Mirror	BA 505-525	BA 505-605	BA 655-755
488nm		DM 405/488	Glass	Glass	BA 480-495	BA 560-620	BA 560-660
515nm		DM 405/488/543/635	SDM 560	SDM 640	BA 430-470	BA 535-565	
543nm		DM 458/515	SDM 510	SDM 560		BA 505-525	
635nm		RDM 690	SDM 490	None			
		None	None	None			

Check appropriate box(es) to correspond with above slider positions