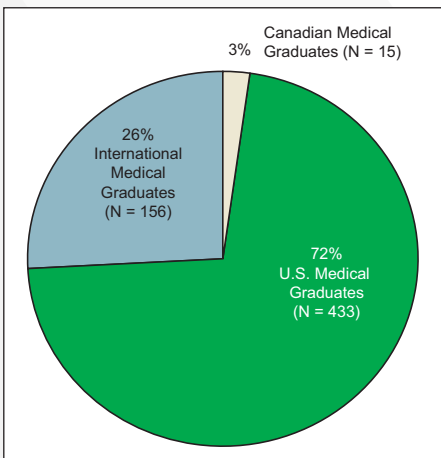


## Characteristics of U.S. and International Medical Graduates Among Primary Care Physicians in North Dakota

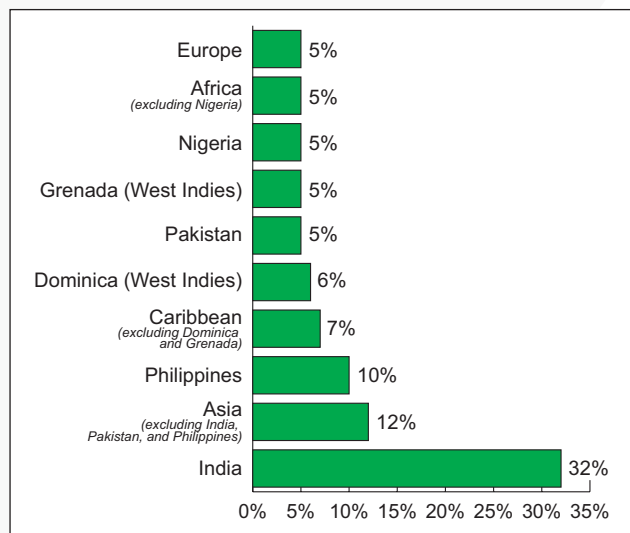
Primary care physicians are defined as those practicing in family/general practice (FP), general internal medicine (GIM), and general pediatrics (Gen Ped).

**Figure 1. Medical School Graduation Location of Primary Care Physicians in North Dakota**

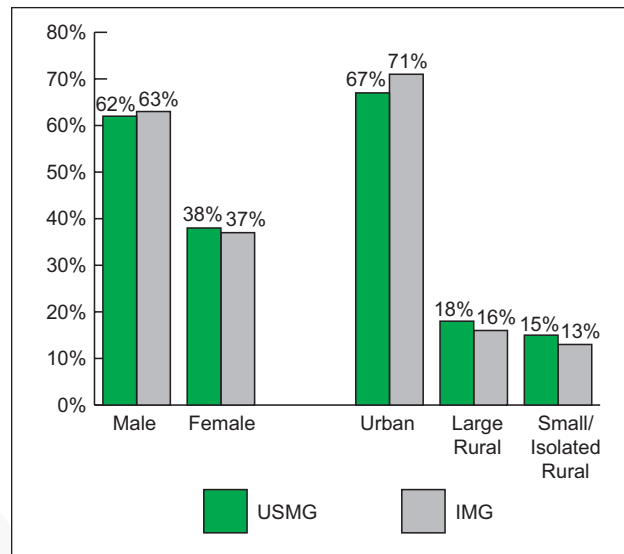


- Figure 2 shows the locations where the international medical graduates (IMGs) received their medical degrees. Most IMGs practicing in North Dakota were from southern and southeast Asia (56%).
- The top three source countries of IMGs were India (32%), Philippines (10%), and Dominica (West Indies; 6%).

**Figure 2. Location of Medical School Graduation for IMG Physicians Practicing in North Dakota**



**Figure 3. Sex and Rural/Urban Status of USMG and IMG Primary Care Physicians**



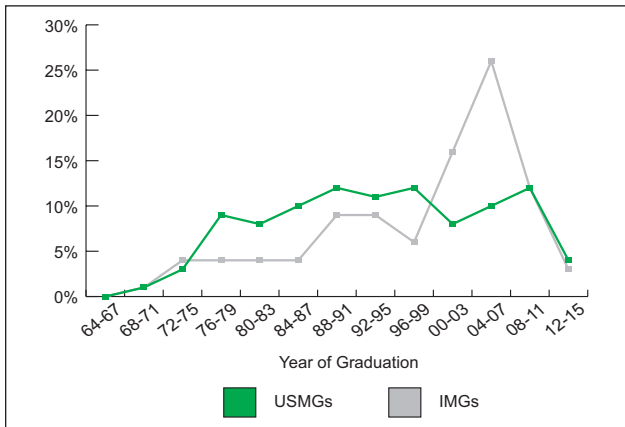
- IMG primary care physicians were slightly more likely to be male compared to graduates from medical schools in the United States and Canada (USMGs).
- IMG primary care physicians were slightly less likely to practice in rural areas than USMGs.

**Table 1. Primary Care USMG/IMG Status by Specialty and Rural/Urban Status**

	FP		GIM		Gen Ped	
	N	%	N	%	N	%
<b>Urban</b>						
USMG	188	63%	61	20%	51	17%
IMG	44	40%	59	54%	7	6%
<b>Large Rural</b>						
USMG	52	66%	14	18%	13	16%
IMG	13	52%	8	32%	4	16%
<b>Small/Isolated Rural</b>						
USMG	52	75%	14	20%	3	4%
IMG	15	71%	6	29%	0	0%
<b>Total</b>						
USMG	292	65%	89	20%	67	15%
IMG	72	46%	73	47%	11	7%

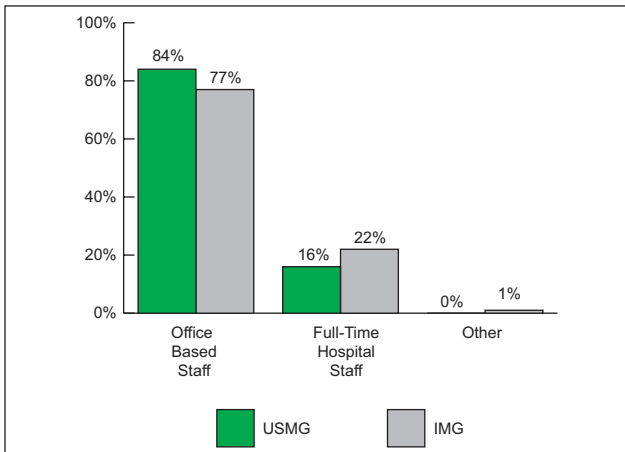
- IMGs were more likely to practice general internal medicine than USMGs.
- IMGs were more likely to practice as FPs in small/isolated rural areas than urban and large rural areas.

**Figure 4. Year of Graduation for Primary Care Physicians by IMG and USMG Status**



- IMG primary care physicians were more likely to have graduated from medical school more recently (1988 or later) than USMGs.

**Figure 5. Type of Practice of Primary Care Physicians by IMG and USMG**



- IMG primary care physicians were less likely to work in office-based practices than USMGs, and more likely to work in hospital-based practices.

**Conclusions**

- Primary care IMGs represented a quarter of primary care physicians in North Dakota.
- IMGs were mostly from Asia, were more likely to be male, and were less likely to practice in rural areas.
- IMGs were more likely to be general medicine physicians than family practice physicians.
- IMGs were more likely than USMGs to practice in hospitals.

**Data**

- The physician data are from the 2017 American Medical Association Physician Masterfile.